

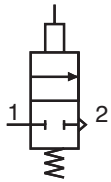
2/2 N-C Whisker Valve

For use with bleed pressure piloted control circuits. Coil spring stainless steel whisker is easily replaceable and can be formed to different shapes.

Medium:
Air

Input Pressure:
10 bar

Air Flow:
28 L/min @ 3.5 bar; 42 L/min @ 7 bar

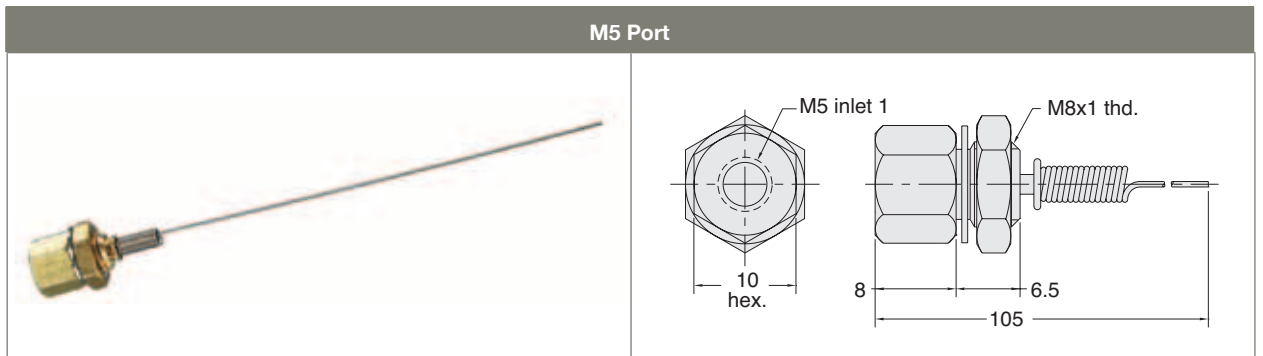


Force For Full Stem Travel:
7 gr. approx.

Mounting:
M8x1 male thread. Nut and lock washers furnished

Bleed:
To atmosphere around whisker stem

Whisker:
Stainless steel, approx. 75 mm length.
Replacement Part No. 12375



Part No.	Description
M-MWV-1	Normally-Closed Whisker Valve